

247 Ton Portable Air Cooled Screw Chiller



Mobile Air

Mobile Air Portable Air Cooled Screw Chiller packages are self-contained and specifically engineered to provide flexible, temporary chilled fluid for commercial and industrial air conditioning and process cooling applications. The chiller package is permanently mounted on a rugged steel tubular frame that can be easily maneuvered with a forklift. These on-board features allow for quick delivery and minimal installation time.

Chiller Features

- Compressor & condenser fan motors with variable speed drives
- R-134a refrigerant (fully charged)
- Voltage code - (460/3/60)
- SP circuit breaker w/lockable handle
- Control transformer
- North American safety code (cUL)
- Compressor heaters
- ASME pressure vessel & associated codes
- Pre-coated fin condenser coil
- Sound reduction options included
- Louvered enclosure panels (condenser only)
- Flow switch with safety interlock

Package Features

- 40 HP integral pump package (standalone/booster)
- Pump bypass option
- 6" strainer – with pump & bypass option
- 6" triple-duty valve – with pump & bypass option
- Steel tubular skid with fork pockets
- 120V-15A convenience outlet
- 120V extension cord shore power option

For more information contact:

Mobile Air

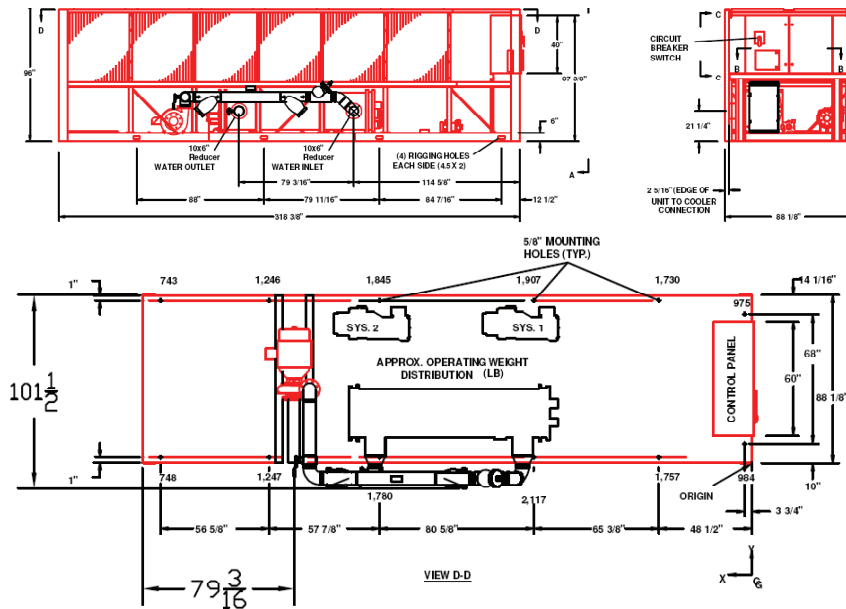
1-800-596-0800

www.mobileair.com



Quick delivery and minimal installation time when you need temporary cooling.

RENTAL CHILLER PACKAGE



Notes: Unit Skid Not Shown in Drawing Adds 6" to Height.

Minimum Clearances: Units Side by Side: 12 ft, Control Panel to Wall: 5 ft, Side to Wall: 8 ft, Front to Wall: 8 ft. Install unit on flat level surface.

General

Chiller Model Number	YCIV0247VA46 ⁽¹⁾
Ambient Operating Range	0-125°F
Chilled Water Setpoint Limits	40-60°F
R-134a Refrigerant Circuits	2
Equipment Insurance Value	\$230,000

⁽¹⁾ See YCIV Engineering Guide Form 201.23-EG1 (510) for additional chiller specifications.

Dimensions (Skid Mounted)

Length	28' 10"
Width	8' 6"
Height	8' 6"
Total Weight	17,970 lbs
Forklift Pockets	4" x 10"
Center on Center	54"

Electrical

Single Point Power Supply Connections (2 per Ø)	460V / 3Ø / 60Hz
Running Load Amps	Series 16 Cam Type 423A ⁽²⁾
Minimum Circuit Ampacity	470A ⁽²⁾

⁽²⁾ Includes 40HP pump (45.7A)

Evaporator Flow

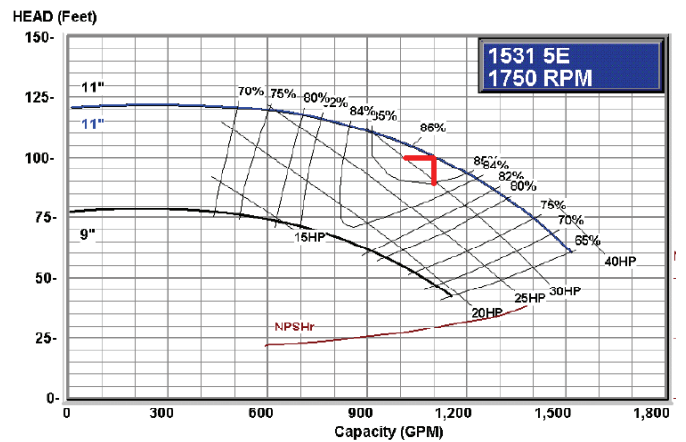
Minimum	180 GPM
Nominal	570 GPM
Maximum	800 GPM
Fluid Connections	6" Grooved
Maximum Water Side Pressure	150 PSIG
Evaporator Volume	140 Gallons

Cooling Capacity (Tons)

Actual capacity subject to leaving temperature, fluid used, jobsite and ambient conditions.

LCWT (°F)	LBT (°F)	OUTDOOR AMBIENT (°F)			
		75	85	95	105
50		270.8	268.5	260.0	248.9
44		247.4	245.4	237.9	229.7
40		232.7	230.8	223.9	216.9

Pump Performance



DETAIL SUMMARY			
Pump Series:	1531	Pump Size:	5E
Flow Rate: (USGPM)	1100	Total Head: (ft.)	100
Pump Speed (RPM)	1750	NPSH req (ft)	11.7
Weight: (lbs)	765	Cost Index:	129
Suction Size: (in)	6	Suction Velocity (fps)	12.2
Discharge Size: (in)	5	Discharge Velocity: (fps)	17.6
Impeller Diameter: (in)	11.	Efficiency: (%)	85.87
Max Impeller Dia (in)	11.		
Max Flow (USGPM)	1515	Duty Flow/Max Flow (%)	0.73
Flow @ BEP (USGPM)	994	Min. Rec. Flow: (USGPM)	228.6
Motor Power, HP:	40	Frame Size:	324JP
Pump Power (BHP)	32.47		
Max Power (BHP)	35.81	Aprox Wt (lbs)	

Cooler Water Pressure Drop

